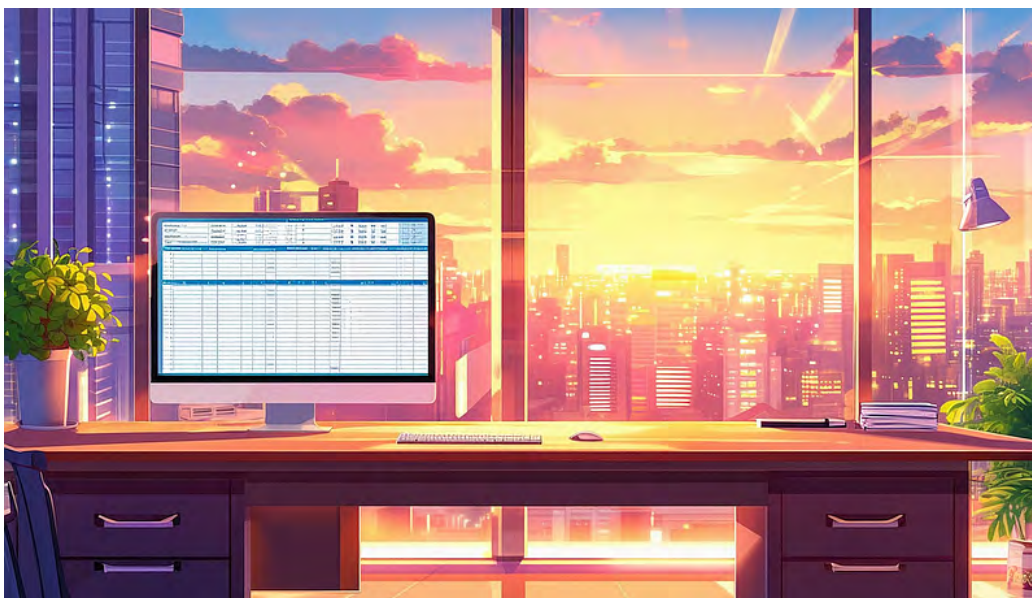


Science Translations

Established 1990



**PC Updater
News**



A New Office, with New Windows

While we expected updates this month, Microsoft provided no prior announcement at all, and released Office 2024 on October 1st, along with the Windows 11 annual feature update '24H2', for 2024 second half. The changes are mostly incremental.

Office 2024

There's a slight name change here: What was Office Home & Student 2021, including Word, Excel, Powerpoint, and OneNote, is now Office Home 2024. The new product that also includes Outlook (email) is Office Home & Business 2024.



Remember that Office is a whole load of products. Office 2024 is the software itself. Microsoft 365 is the monthly subscription to Office for businesses, and the annual subscription for single or family users, and there are additional groups of services for the enterprise/large office market. Microsoft 365 includes the Office upgrades year over year, but the buy-once versions of Office do not include major version upgrades, just bug fixes and security patching.

In years past, Office had up to five years of product support, followed by five years of security patching, up to ten years in all. That's greatly shortened now, down to five years of security patching. Any office subject to security compliance may have to upgrade now, and any newly-found security holes in old software will, in all but extreme cases, not be patched. As of October 2024, here's the state of security patches:

- Office 2013: last security patch was in April 2023.
- Office 2016 and Office 2019 will reach the end October 14th, 2025.
- Windows 10 shares that date; end of patching will be October 14th, 2025.
- Office 2021 will end October 13th, 2026.
- Office 2024 security patches will end October 9, 2029.
- A longer list of end-of-service dates is at <https://pc410.com/calendar>

What's New?

There is a new default theme, changes made so that the suite can work on more device types and be in compliance with updated accessibility requirements, and updates for creating accessible documents. Documents can have 'likes,' which may be useful where there is group editing.

Excel adds an image function, and more text tools. PowerPoint can insert a live camera feed into a slideshow, useful for Zoom presentations. And closed

captions can be added to videos.



The new features of Office 2024 are at Microsoft:

Summary and Announcement:

<https://www.microsoft.com/en-us/microsoft-365/blog/2024/09/30/office-2024-for-consumers-available-october-1/>

Longer list with links to more information on each topic:

<https://support.microsoft.com/en-us/office/what-s-new-in-office-2024-and-office-ltsc-2024-baadecbe-a8fc-4435-8cb8-70e93fd08b56>

Windows 11 24H2

As of now, all Windows 11 production or office computers should be on last October's feature update 23H2. I won't recommend 24H2 for at least 2 months, while other guinea pigs chase out the bugs. Microsoft has specifically said that 24H2 is not ready for gaming PCs yet.

And the older Windows 11 feature editions, 22H2 and earlier, reached the end of security patches this week, on October 8th, 2024, and should now have all been upgraded to 23H2. (Run 'WINVER' from the start menu in Windows to check the feature release version.) Call if your systems need a push to 23H2. As for Windows 10, the last feature version was 22H2.



I'll hold off on listing new features right now. When 24H2 is ready to be widely installed, I'll list the best new features in this newsletter. For now, 24H2 should not show up unannounced; it will start out, like all previous versions, as an optional update to Windows, only on computers with hardware and software already known to work with it. In other words, other guinea pigs with similar systems had no crashes recorded, so the Microsoft server offers it to similar computers. That's telemetry or phone-home at work, telling Microsoft what hardware and programs you're running, and how they crash. So again, stay on Windows 11 23H2 for now.



Happy Halloween

Images created with artificial intelligence are getting better all the time. Google search indexing likes one-of-a-kind images. If your website needs unique art, call me for AI-assisted photo creation services. Stock art is no longer an option; I've seen stock art take-down notices from a publisher for photos that were legally purchased from another stock agency. I use either original art, new photos, or AI creations for web sites now.



Copyright © 2024 Science Translations, All rights reserved.

You are receiving this email because you opted in via our website or by discussion with me.

For computer help, call 410-871-2877

Missed a newsletter? [Back Issues](#)

Mailing address:

Science Translations

PO Box 1735

Westminster, MD 21158-5735